



WINDOW
SYSTEM

Vizus 90

Sophisticated esthetics of clearly
defined and unified forms



Window system AT90Hi / residential building Merin Plaza, Bgrade

Characteristics of design

Vizus 90 is a set of two composite systems of aluminum and aluminum-wood, whose performances render them a high class of aluminum joinery. Their thermal resistance is based on the idea that regarding the ratio of the surface area of the window sash and glass, the role of the glass is higher in achieving the total thermal conductivity coefficient of the entire window. With this in mind, **AT90Hi** and **VP90Hi** systems provide for triple glazing. At the same time, both systems have excellent properties in terms of wind resistance and water/air tightness.

Window systems Vizus 90 in the formal sense represent the very essence of the designing approach of the Vizus team. The sophisticated esthetics of clearly defined and unified forms is acceptable for most architectonic and interior trends. The fact that both sides of both systems appear identical provides a special contribution which allows for implementing a unique detail in the interior, while simultaneously making a distinction in the interior space use by employing aluminum and wood.

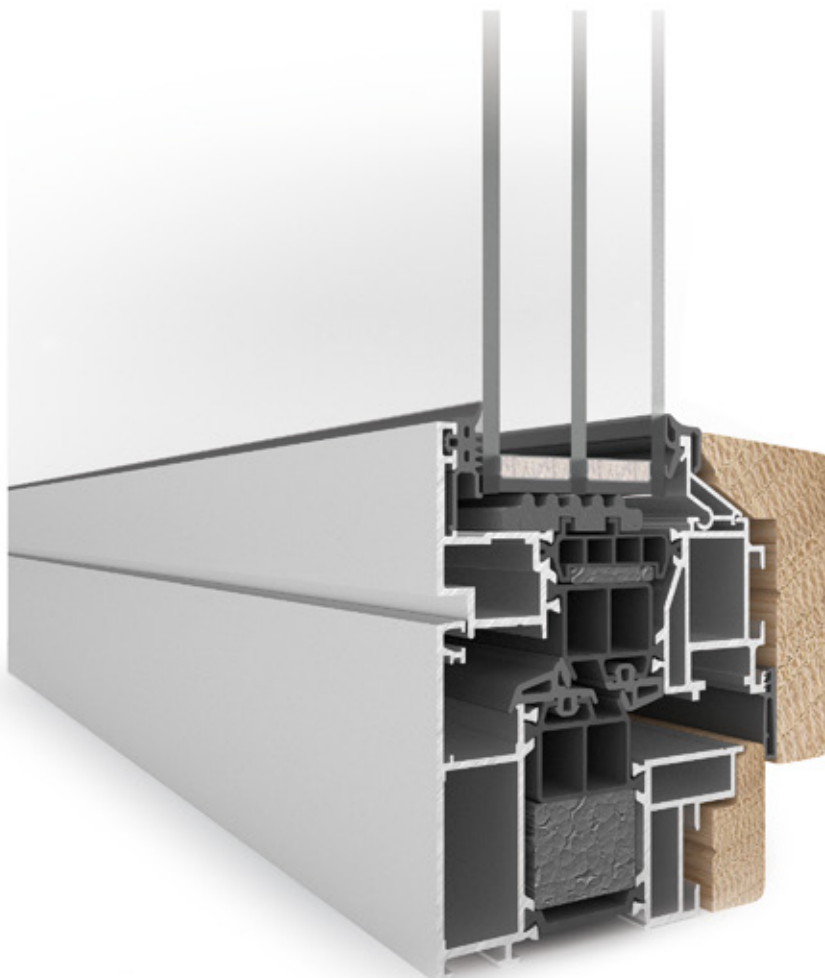


Window system AT90Hi / residential building Merin Plaza, Bgrade

AT90Hi

Vizus AT90Hi is a composite window system of structural aluminum profiles whose thermal bridge is broken by using polyamide profiles and wooden lining on the interior side. The basic width of the sash is 90mm, with double medium seals and inserted styrodur profiles provides a solid thermal protection to the window sash. The system provides for the standard width of the infill of 48mm. The wooden lining is made industrially joined frames, impeccably machined and surface finished. The hardware slots are set in the aluminum, thermally resistant profiles, so that in terms of durability and precision of operation they possess all the advantages of aluminum windows.

The monolithic quality of both the exterior and interior frame is the main feature of the design. On the outside, pure and simple outlines do not encumber the architectonic concept of the building, while on the inside, the wooden frame creates a special intimacy with the interior through the beauty of its texture and tactile quality of the wood.



1

Cross section
through the
opening section
of the window
sash



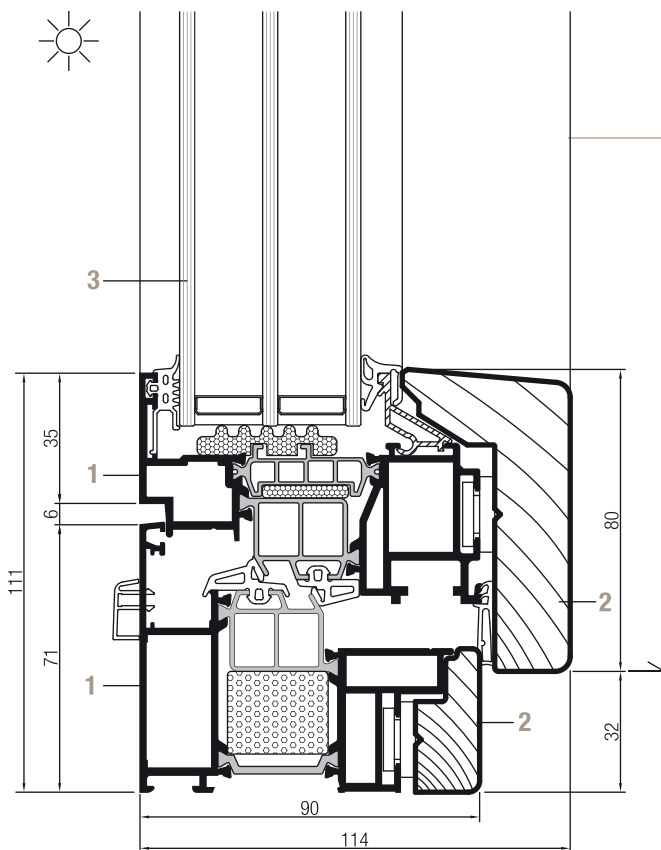
2

Single sash
window/internal
view

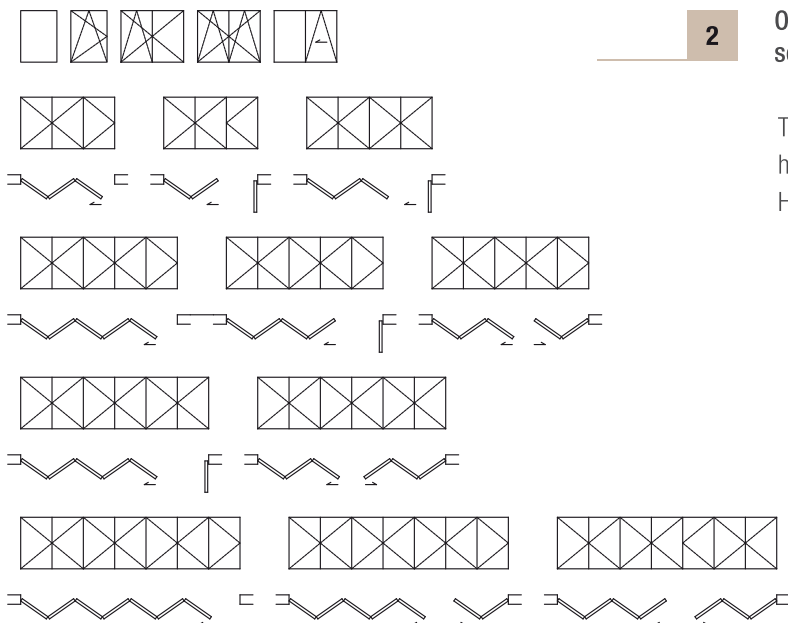
3

Single sash
window/external
view



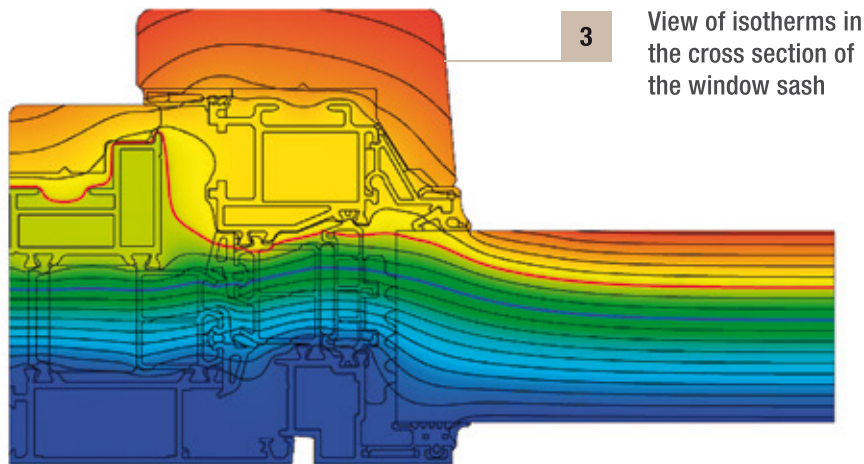


- 1** Cross section through the opening section of the window sash
- 1** Aluminum profiles of the frame and the sash doubled with polyamide profiles, anodized or plastic coated in optional colors.
 - 2** Oak wood tone colored as specified by the customer, with the finish layer of water-based varnish with a desired sheen percentage
 - 3** Triple thermal insulation glass, optional in terms of thickness, quality, color and reflection from the market assortment.



- 2** Optional window schemes:
- The standard offer comprises MACO or ROTO hardware, with visible and hidden hinges, and Hoppe Toulon handle.

**permissible dimensions of the sashes are determined according to the diagrams resulting from the capacity of the system and hardware*

Window system characteristics:

WinIso® 2.7.5. © Sommer Informatik GmbH, registered for Vizus d.o.o.

Wind resistance **Class C4**

Air tightness **Class 4**

Water tightness **E900**

Frame thermal conductivity coefficient

Uf=1.43W/m2K

*thermal conductivity coefficient on the window of certain dimensions when using the triple glazing $U_g=0.50\text{W/m}^2\text{K}$ and We spacer bars:

Dim. 1230 x 1480mm $U_w=0.88\text{W/m}^2\text{K}$

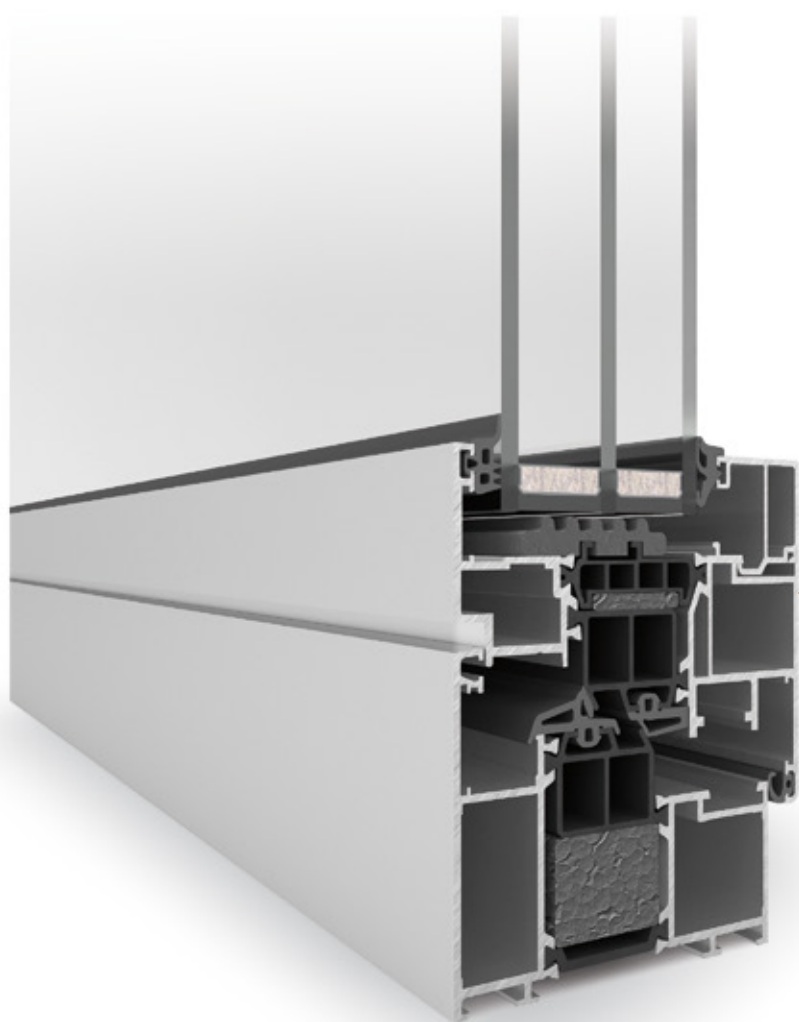
*thermal conductivity coefficient on the window of certain dimensions when using the triple glazing $U_g=0.60\text{W/m}^2\text{K}$ and We spacer bars:

Dim. 1230 x 1480mm $U_w=0.95\text{W/m}^2\text{K}$

VP90Hi

Vizus VP90Hi is composite window system of aluminum profiles with a thermal break effected by polyamide profiles. The basic width of the sash of 82mm, with double medium seals and inserted styrodur profiles provides a solid thermal protection to the window sash. The system provides for the standard width of the infill of 50mm. The hardware slots are set in the inside, thermaly resistant profiles, and they are made as a Euro slot system for the aluminum windows.

The design of the window system VP90Hi is based on the established esthetics of aluminum windows with the monolithic external frames and on the internal frame of the sash with the glazing bid. They can be joined at the corners using the T joint or mitre joint, depending on the thickness of the thermal insulation glass.



1

Cross section
through the
opening section
of the window
sash



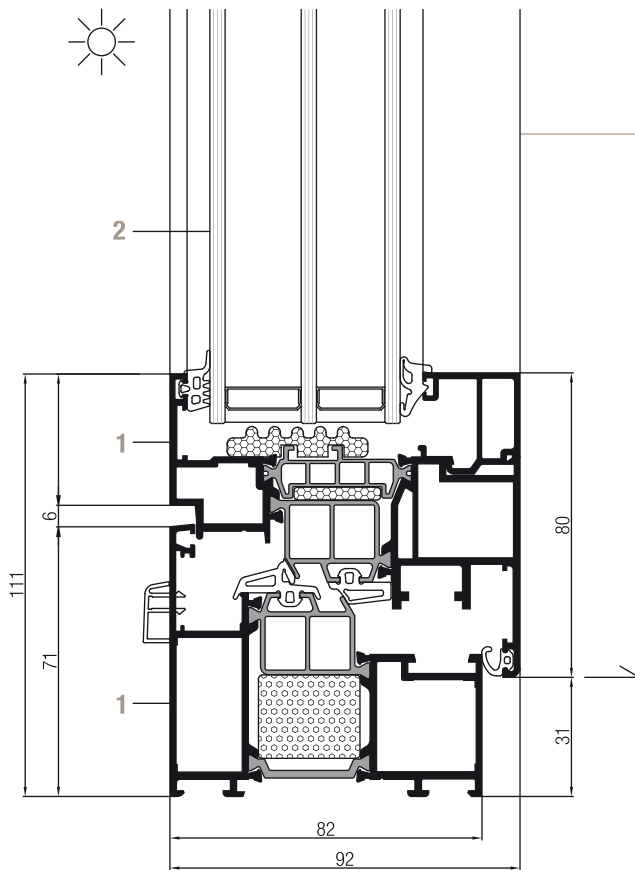
2

Single sash
window/internal
view



3

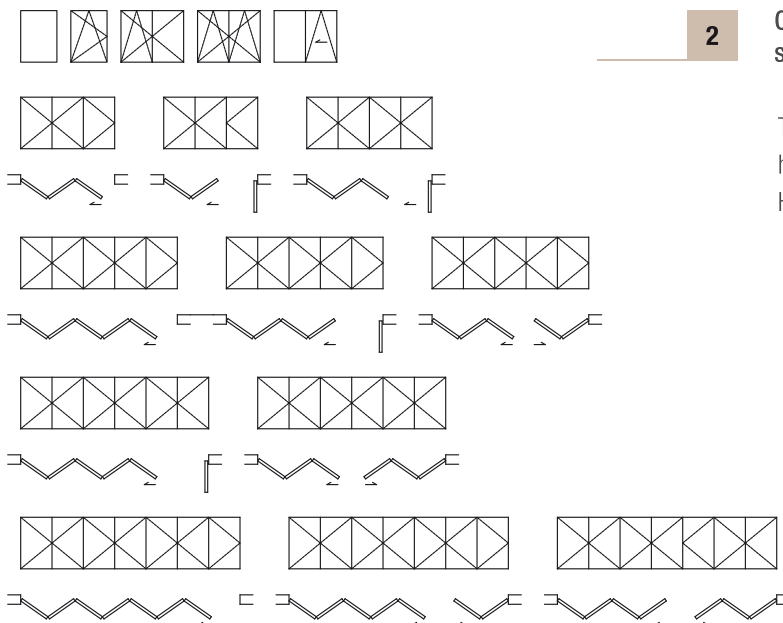
Single sash
window/external
view



1

Cross section through the opening section of the window sash

- 1 aluminum profiles of the frame and the sash doubled with polyamide profiles, anodized or plastic coated in optional colors.
- 2 Triple thermal insulation glass, optional in terms of thickness, quality, color and reflection from the market assortment

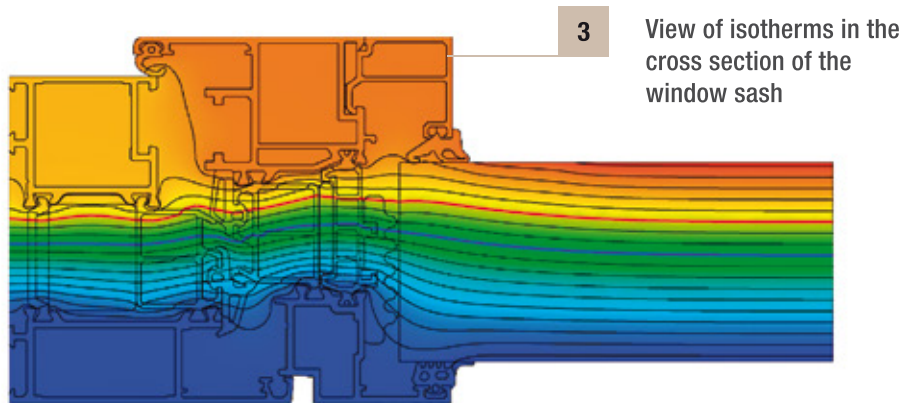


2

Optional window schemes:

The standard offer comprises MACO or ROTO hardware, with visible and hidden hinges, and Hoppe Toulon handle.

**permissible dimensions of the sashes are determined according to the diagrams resulting from the capacity of the system and hardware*

Window system characteristics:

WinIso® 2.7.5. © Sommer Informatik GmbH, registered for Vizus d.o.o.

Wind resistance **Class C4**

Air tightness **Class 4**

Water tightness **E900**

Frame thermal conductivity coefficient

Uf=1.75W/m2K

*thermal conductivity coefficient on the window of certain dimensions when using the triple glazing $U_g=0.50\text{W/m}^2\text{K}$ and We spacer bars:

Dim. 1230 x 1480mm $U_w=0.98\text{W/m}^2\text{K}$

*thermal conductivity coefficient on the window of certain dimensions when using the triple glazing $U_g=0.60\text{W/m}^2\text{K}$ and We spacer bars:

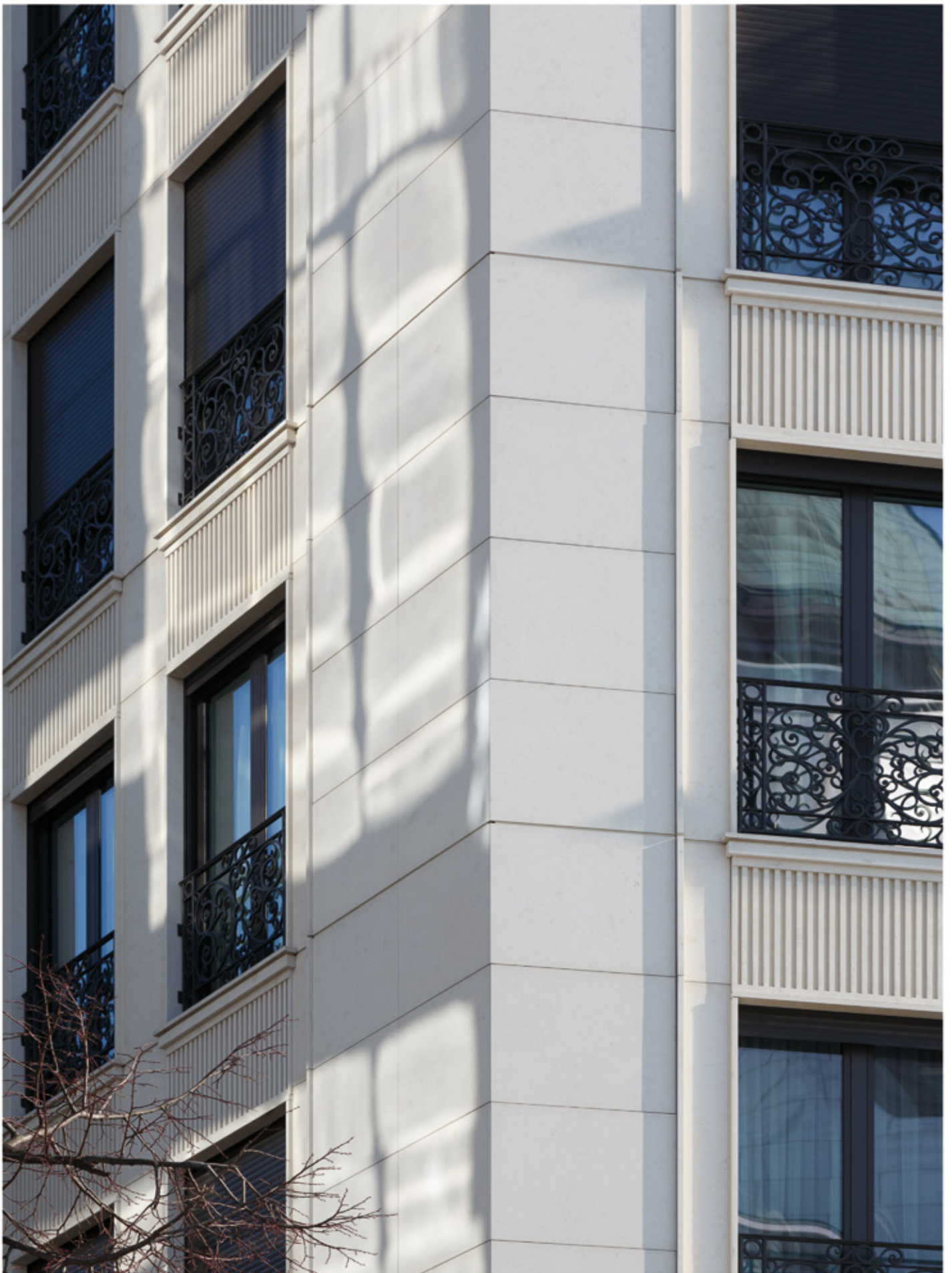
Dim. 1230 x 1480mm $U_w=1.05\text{W/m}^2\text{K}$

Wood color chart

Full wood

Interior wooden frames are firstly joined and then surfaced, color toned and finished with water based varnish. Color tones are chosen from the enclosed Vizus color chart, or according to a sample supplied by the customer.





Window system AT90Hi / residential building Merin Plaza, Belgrade



Window system AT90Hi / residential building Merin Plaza, Belgrade

Notes



WINDOW
SYSTEM

Vizus 90



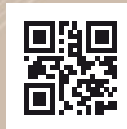
Ruzmarina No 15 – D.Vrežina

18000, Niš, Serbia

Phone / +381 18 577 073, 577 074

Fax / +381 18 200 880

info@vizus.rs



www.vizus.rs

Photography / Relja Ivanić

3D views / Srđan Stojanović

Catalog graphic design / White Circle Studio

2022.